

25

YEARS

AUTUMN

2017

NO. 39

VOL. 25

15 €

# PIRANESI

ARCHITECTURAL ICON

INTERVIEW

PIRAN DAYS OF  
ARCHITECTURE 2016

ARCHITECTURE  
AND DESIGN

## Rafut Villa, Nova Gorica, Slovenia

Jurij Kobe A Line Has the Power to Lead You

Piranesi Award: **Plečnik House Renovation**, Ljubljana, Slovenia ■ Piranesi Mention: **Jigiya So' Rehabilitation Center**, Kati', Republic of Mali ■ **Fire Station**, Versciaco, Italy ■ Piranesi Student Mention: **Mzamba Bridge**, Eastern Cape, South Africa

**House in the Alps**, Stara Fužina ■ **Maternity Home**, Ljubljana ■ **Renovation of Faculty of Civil Engineering, Transportation Engineering and Architecture**, Maribor, Slovenia ■ **University Innovation - BIOCENTER**, Zagreb, Croatia ■ **Salgenreute Chapel**, Krumbach ■ **Housing Development**, Vienna, Austria ■ **Multipurpose Building Dorn**, Brno, Czech Republic ■ **Rudapithecus Spectacle of Monkey Island**, Felsőtelekes, Hungary ■ **Ledina & Poljane Grammar School**, Ljubljana, Slovenia



**SVET VMES ARCHITECTURE:**  
**JURE HROVAT, ANA KREČ**

**Gimnazija Ledina in gimnazija**  
**Poljane, Ljubljana**

**Ledina Grammar School and Poljane**  
**Grammar School, Ljubljana**

✎ MATEJA PANTER 📷 MATEVŽ PATERNOSTER

Arhitektura  
vmesne površine

Architecture of  
In-between Spaces

Igrivo drzne in funkcionalno  
dovršene intervencije.  
Playfully daring and functionally  
perfected interventions. 157



**P**rojektivni biro Svet vmes je od leta 2010, ko je bil ustanovljen, v slovenskem prostoru že zarisal svojo značilno linijo. Še posebej pomenljivo je, da jim je to uspelo skozi sorazmerno majhne projekte. A prav v tem je njihova čarobna paličica – vsake naloge se lotijo spoštljivo, z veliko idejo, neustrahovano, izzivalno, konceptualno, detajlno ... Zato izvedbe njihovih projektov delujejo na opazovalca ali uporabnika igrivo drzno in obenem funkcionalno dovršeno.

Še posebej so zaznamovali izobraževalne ustanove, kamor v prevladujoče suhoparne in sivo nezanimive prostore vnašajo mladostno energijo in ustvarjajo vzpodbudno okolje za šolarje in učitelje. Kljub okvirom, ki jim jih narekujejo tehnični predpisi o varnosti, meje javnega financiranja ali spomeniško varstveni pogoji, izjemno domiselno posegajo v obstoječe (šolsko) tkivo in s svojimi rešitvami pripomorejo k splošnemu napredku v šolstvu. Ta se namreč mnogo premalo vidi prav v opremljenosti prostorov ter v spodbujanju novih tipologij

izobraževalnih ustanov, ki bi morale spremljati in vzpodbujati nove načine poučevanja, pri čemer bi veliko večjo pozornost ter vrednost pridobili tudi »prostori vmes«.

Svet vmes vodita arhitekta Ana Kreč in Jure Hrovat, ki sledita izhodiščni ideji biroja, da njihovi projekti s posegi v prostor izzivajo obstoječe razumevanje in dojemanje vmesnih prostorov in prostorskih ostankov v izobraževalnih ustanovah ter izkoriščajo njihov oblikovni ter prostorski potencial. Kot pravita, v biroju skozi večletno opazovanje in postopno interveniranje analizirajo obstoječe, razpadajoče, pozabljene notranje in zunanje vmesne prostore ter jih transformirajo v prostore dogodka, udobja, interakcije, pogajanja, navdušenja in odmika. Na tak način opozarjajo na lepoto in pomen vmesne, dvoumne cone v šolski arhitekturi, ki nikakor ne bi smela biti razumljena kot nekaj odpadnega, temveč kot bistvena identiteta šolskih objektov.

V Gimnaziji Ledina v Ljubljani so s svojimi intervencijami preobrazili dva prostora – sprojektirali so »Šolsko

pokrajino« in »Loggio«. Gimnazija Ledina (bivše učiteljske) je ena izmed starejših ljubljanskih srednjih šol, ki deluje že 150 let. Šola povzema značilno obliko črke »U« z dvema glavnima vhodoma, ki sta bila prvotno ločena za posamezna spola. Danes je v uporabi samo eden od obeh vhodov, drugi pa je zaradi varnostnih razlogov zaprt in brez funkcije. V tej prazni neizkoriščeni niši so arhitekti videli potencial in jo preobrazili v prostor za prostostane dejavnosti. Pozabljeno (vmesno) površino so transformirali v spodbudno in funkcionalno okolje, kjer lahko dijaki kvalitetno preživljajo prosti čas. Neprijazen dvovišinski prostor so oblikovali v enotno, valovito in mehko pribežališče. Tu je tudi brezžični internet, za bolj sproščeno ozračje poskrbi zvočna kulisa, na voljo je celo projektor. Javni šolski prostor so s tem posegom oplemenitili – prej mrtev prostor je postal živa »Šolska pokrajina« številnih vsebin, tudi malo drugačna učilnica, če je to potrebno.

A tudi glavni, danes edini, vhod v gimnazijo je bil neprilagojen sodobnim razmeram; danes poteka mimo

**Šolska pokrajina**, Gimnazija Ledina, Ljubljana, Slovenija  
**School Landscape**, Ledina Grammar School, Ljubljana, Slovenia

PROJEKT PROJECT

**Prenova in popolna preobrazba neizkoriščenega sekundarnega šolskega vhoda v atraktivno, večnamensko, poljavno dnevno sobo**

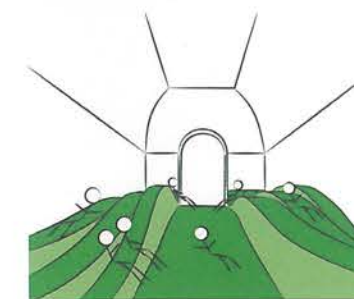
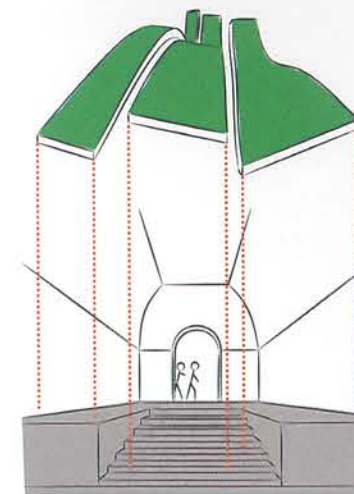
Renovation and complete transformation of the unused secondary school entrance into an attractive, multi-purpose, semi-public living room

LETO YEAR

2013

ARHITEKTURA ARCHITECTURE

Svet vmes (Jure Hrovat, Ana Kosi, Ana Kreč, Tina Rome)



zelo prometna cesta, ki onemogoča druženje pred šolo ali izvedbo kakršnekoli razširitve, ki bi nakazovala pozicijo glavnega vhoda. Arhitekti so zato prostor druženja premaknili v notranjost plašča stavbe – v nasprotju s klasičnimi oblikami se tu vhodna avla odpira neposredno na hodnik in proti notranjemu dvorišču. Ta prostor predstavlja prvi stik med šolo in obiskovalcem ter naj bi bil najbolj reprezentativen del pritličja, ki v tem primeru lahko prevzema vlogo pol javnega parterja, vlogo loggie. Arhitekti so »Loggio« kot programsko vsebino postavili v obstoječo strukturo stare konstrukcije objekta in obenem uokvirili pogled na predvideno vkopano telovadnico. S premišljenimi intervencijami so dosegli, da je prostor dobil novo vrednost in postal notranji šolski trg. Označili so ga s privlačno, zgodovinsko in obenem edukativno stropno tapeto, ki razloži preteklost ljubljanskega učiteljskega ter predstavi pomembnejše pedagoge, ki so tam poučevali. Ob dveh stenah so predvideli »programske okvire«: v sebi skrivajo različne rekvizite, ki omogočajo raznovrstne prostorske konfiguracije. Z njimi lahko prostor ne le povsem izpraznimo, temveč uredimo tudi za večja zborovanja ali razstave, če elemente izvlečemo, pa lahko ustvarimo različne kotičke za delo in posedanje v skupinah ali individualno. V »programskem okviru« je skritih kar 12 izvlečnih tribun, 6 miz ter 26 mehkih

elementov, kock in kvadrov, s katerimi si dijaki ustvarijo lastne prostorske situacije.

Biro Svet vmes je dva projekta izvedel tudi na Gimnaziji Poljane v Ljubljani – »Avlo devetih okvirov« in zunanji atrij. Gimnazija Poljane je bila ustanovljena leta 1889 in se ponaša s kvalitetnimi historičnimi lupinami, kjer so ohranjene prvotne stenske in stropne štukature ter umetelno izdelani stebri, ki so postavljeni v strogo simetrično os. Os predstavlja povezavo manjšega trga pred objektom z vstopno avlo in naprej z osrednjim stopniščem, ki je glavna komunikacijska pot vseh uporabnikov objekta.

Pri konceptu prenove vhodne avle so želeli arhitekti te kvalitetne historične elemente poudariti, kar jim je uspelo z izvedbo strogega simetričnega podija, z osnovnimi izčiščenimi kvadrati in s potezami elegantne črne barve. V prostor avle so vstavili dvignjen, stopničast betonski podij, ki še dodatno poudari simetrično vstopno os in obenem vabi k posedanju med odmori. Na podest je pritrjenih devet jeklenih prostorskih okvirjev različnih dimenzij s transparentnimi polnili, ki ne zastirajo pogledov proti osrednjemu stopnišču. Na prvi pogled krhka geometrijska telesa na scenografiji belih sten in bogatih historičnih oblik delujejo umetniško, kot umetniška intervencija, inštalacija ali element presenečenja v šolskem okolju. A imajo

tudi povsem funkcionalno vlogo – sedem kubusov je namenjenih šolskim razstavam, v enem bo stalno razstavljena skulptura in en kubus je vratarnica. Ambient zaokrožuje veliko minimalistično svetilo, ki poudarjeno osvetljuje historični, s svetilnicami štukaturami okrašeni strop, kar poudari reprezentančnost vhodne avle.

Drugi projekt na Gimnaziji Poljane je ureditev zunanjega atrija šole, ki je registrirana kot objekt kulturne dediščine. Arhitekti so prišli v neugleden prostor, ki so ga določale notranje fasade stavbe in asfaltirana talna ploskev. V takšnem okolju so potekale komunikacijske poti med šolsko stavbo in telovadnico, šolske prireditve ter druženje dijakov med prostim časom. V biroju Svet vmes so se odločili za radikalen poseg – v togost obstoječega so posegli z naravnimi, organskimi, mehki in prijetnimi elementi. Uporabili so fragmentirani vzorec ponavljajočih se zaobljenih oblik nepravilnega trikotnika. Z metamorfozo tega elementa v velikosti, razmerju, obliki in materialu so odgovorili na vse potrebe uporabnikov obravnavanega prostora. Ne le, da so predvideli mikrolokacije za druženje in obenem za možnost izvedbe drugih šolskih dogodkov, poskrbeli so za pestrost oblik, materialov, vnesli so rastline (ki odražajo spreminjanje letnih časov) in celo vodno ogledalo. Fragmentirani vzorec trikotnih elementov, ki so kot kamni razporejeni





**Loggia**, Gimnazija Ledina,  
Ljubljana, Slovenija  
**Loggia**, Ledina Grammar School,  
Ljubljana, Slovenia

PROJEKT PROJECT

**Prenova vhodne avle v reprezentančni  
prostor šole in prostor za druženje**  
Renovation of the entrance hall that thus  
became a representative space in the  
school and a place for socialising

LETO YEAR

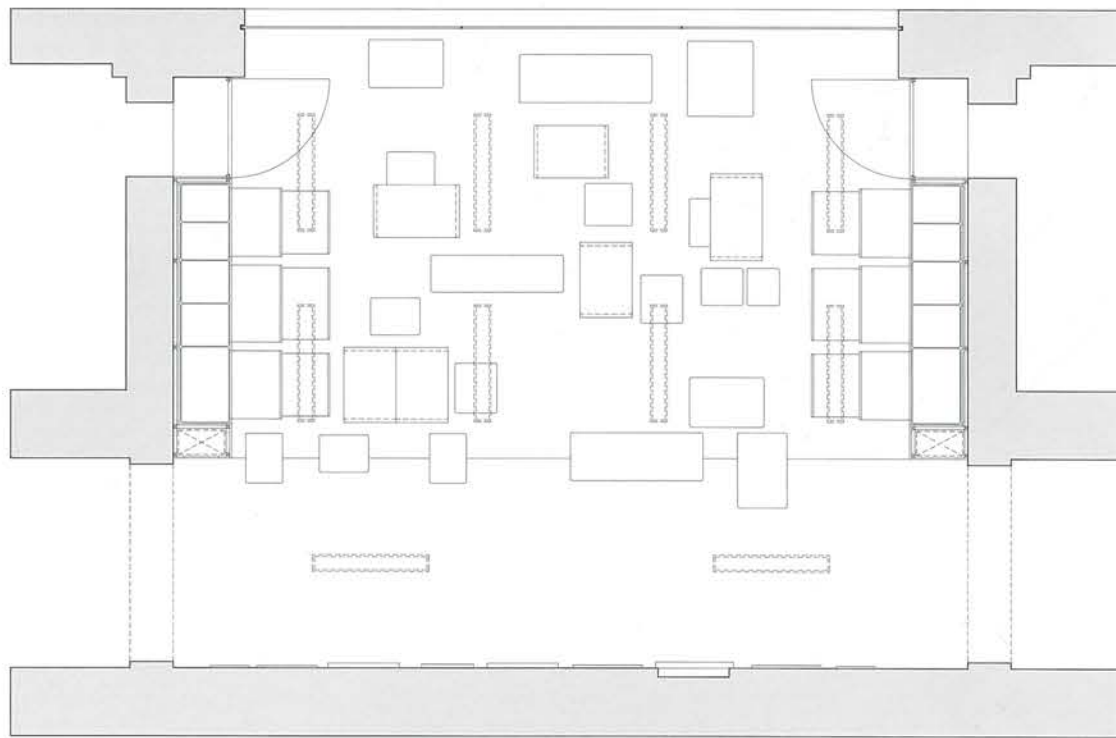
2014

ARHITEKTURA ARCHITECTURE

**Svet vmes** (Jure Hrovat, Ana Kosi,  
Ana Kreč, Žiga Rošar)

GRAFIČNO OBLIKOVANJE GRAPHIC DESIGN

Hana Domijan



0 0.5 1 2



po prostoru, so interpretirali kot pozitiv, medprostor (vmesni prostor) pa kot negativ, ki povezuje te elemente. Zadostili so potrebam, kot je odmik od fasade, neusmerjenost trga in različni programski otoki. Pomembna je tretja dimenzija atrija – tlorisna grafično izčiščena urbana krajina prek oken komunicira z vsemi šolskimi hodniki, ki so orientirani na trg, kar je pomemben doprinos k urejenosti scene celotnega okolja.

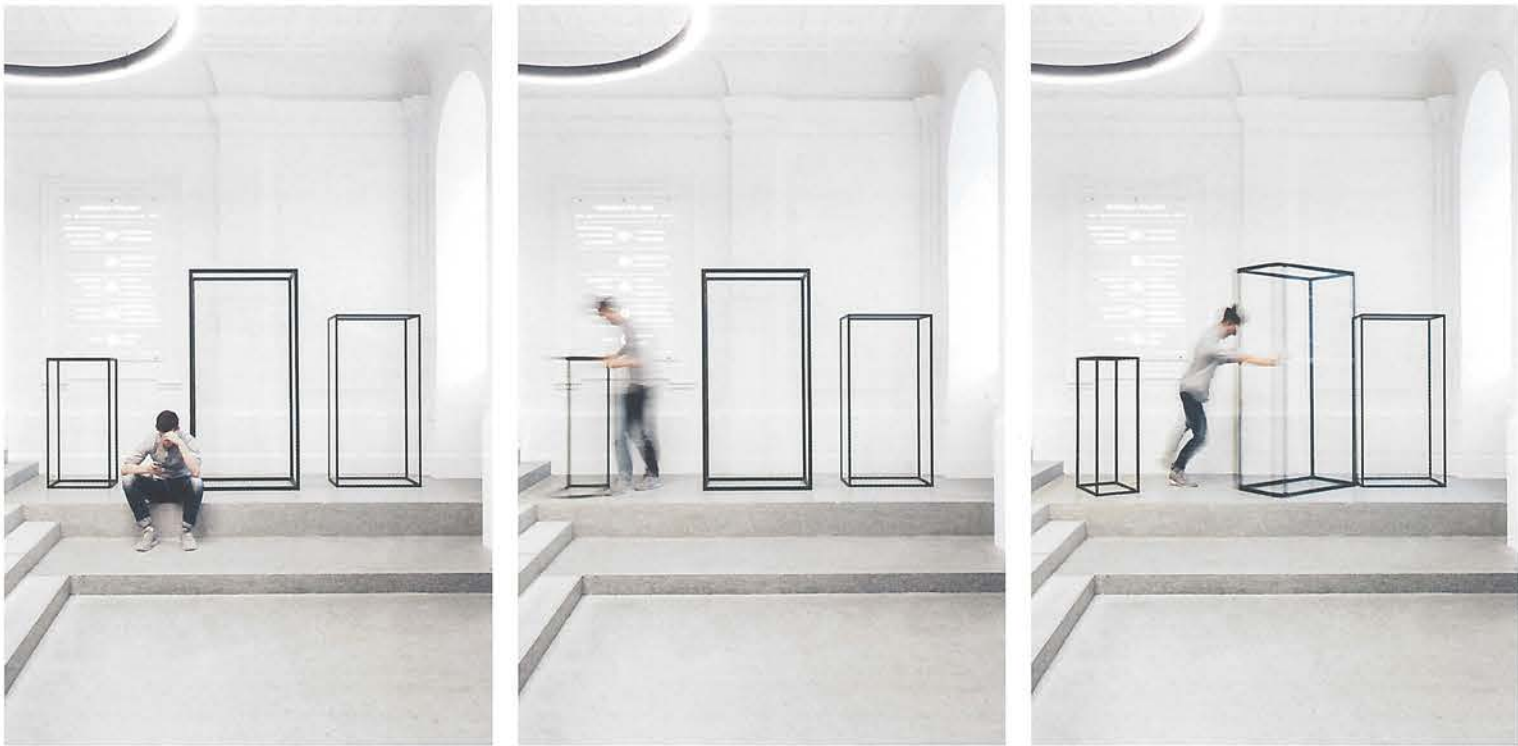
Biro Svet vmes ima za seboj številne projekte, ki so vezani na izobraževalne ustanove; njihovi projekti so kot mikro-okolja, ki jih uporabljajo malčki, otroci, mladostniki in tudi odrasli. Arhitekta Jure Hrovat in Ana Kreč imata zato v rokah (v glavi in srcu) pomembne niti – vzgojo o kulturi bivanja, o odnosu do lepega, o razumevanju oblikovanega okolja ...

Za svoje delo so prejeli nagrade doma in v tujini, v letu 2015 je bil biro prepoznan kot »držna oblikovalska praksa« (venturous design practice) z močno socialno agendo in kot tak uvrščen v mednarodno raziskovalno mrežo ADAPT-r ITN -Architecture, Design and Art Practice Training-research. ☺

**W**hile only established in 2010, the *Svet vmes* architectural office has already developed its characteristic line, and it is especially noteworthy that they managed to do so through relatively small projects. And this indeed is where their magic lies – they tackle every task with respect, with a great idea, fearlessly, in a challenging and conceptual way, and in detail ... This is why the realisations of their projects affect the observer or user in a playfully daring and at the same time functionally perfected manner.

They have particularly marked educational institutions by introducing a youthful energy into what are usually dull and greyish uninteresting premises, and by creating a stimulating environment for both students and teachers. Despite the framework dictated to them by technical regulations on safety, the limits of public financing or the conditions for cultural heritage protection, they intervene inventively into the existing (school) tissue and contribute with their solutions towards general progress in the educational system. This, however, is sadly





**Avla devetih okvirov**, Gimnazija Poljane, Ljubljana, Slovenija  
**9 Frames Hall**, Poljane Grammar School, Ljubljana, Slovenia

PROJEKT PROJECT

**Prenova vhodne avle**  
**Renovation of the entrance hall**

LETO YEAR

**2015**

ARHITEKTURA ARCHITECTURE

**Svet vmes (Jure Hrovat, Ana Kosi, Ana Kreč)**

not so evident in the equipment and furniture used in such premises, nor in the promotion of new typologies of educational institutions that should accompany and stimulate new ways of teaching, whereby much more attention and value should be given to the »in-between spaces.«

*Svet vmes* is led by two architects, Ana Kreč and Jure Hrovat, who both follow the initial idea of the office that their projects and interventions into space should challenge the current understanding and perception of in-between spaces and the remnants of spaces in educational institutions, and that they should exploit their formal and spatial potential. As the two say, their office analyses the current, dilapidated, forgotten interior and exterior in-between spaces on the basis of several years of observations and gradual interventions, and transform them to become spaces of events, comfort, interaction, negotiation, enthusiasm, and retreat. In this manner, they point to the beauty and importance of the in-between, those ambiguous zones in school architecture that should not at all be understood as something that can be wasted, but rather as an essential identity of the premises.

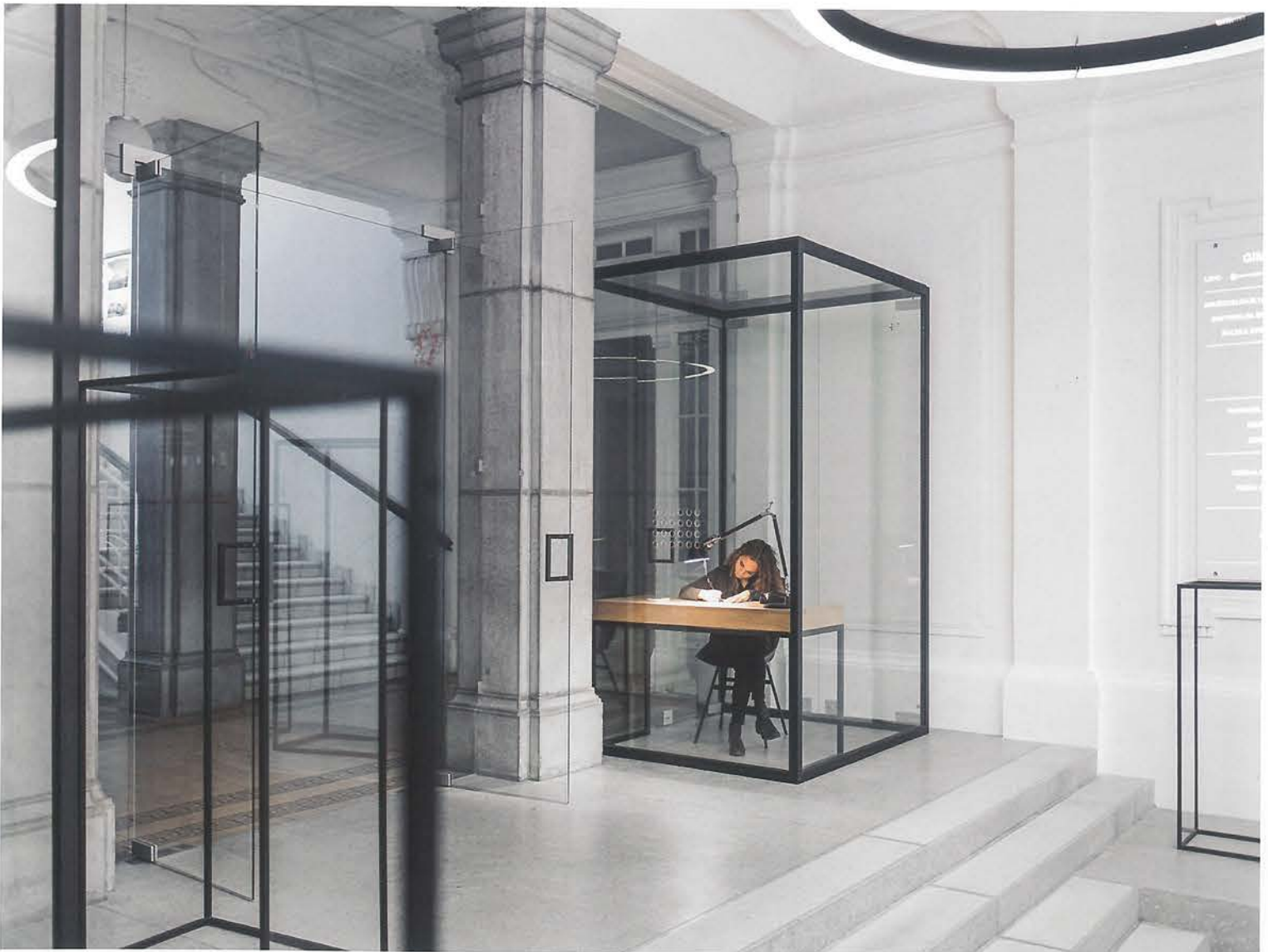
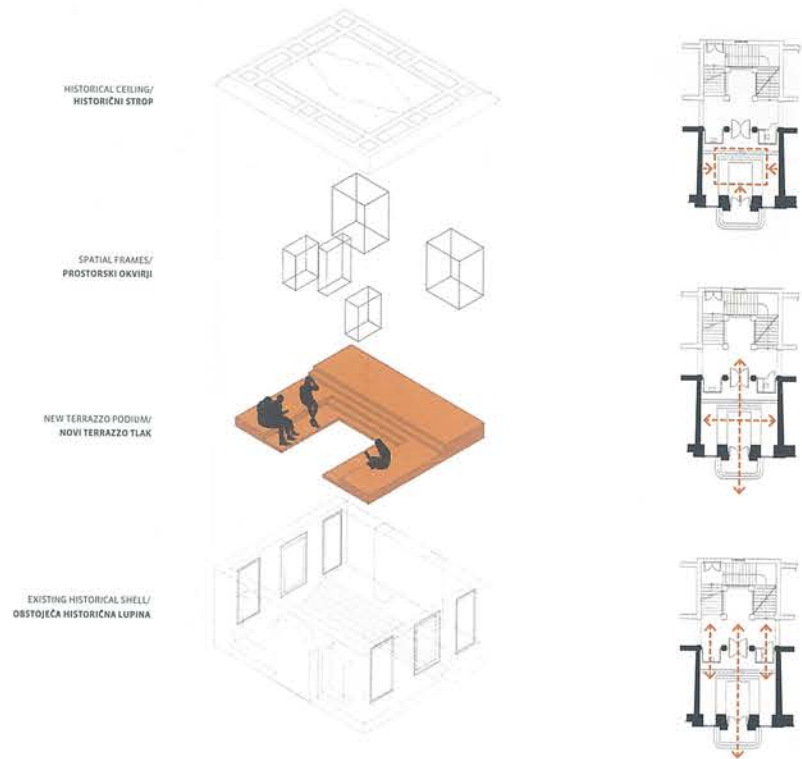
In the Ledina Grammar School in Ljubljana they transformed two of the spaces with their interventions, the »School Landscape« and »Loggia«. The Ledina Grammar School (formerly the College of Education) is one of the oldest secondary schools in Ljubljana, and has already been operating for 150 years. The school has the characteristic U-form with two main entrances

that were originally separated according to gender. Today only one of the two entrances is in use; the other has been closed for security reasons, and now has no function. In this empty and unused niche the architects saw some potential, and thus transformed it into an activities area. This forgotten (in-between) space became a stimulating and functional environment where students can spend their free time in a quality manner. The original, unpleasant two-level space was designed to become a unified, undulating and soft refuge. It now has a wi-fi hotspot, and the use of background music creates a more relaxed atmosphere, with even a projector available when needed. The public school space was enriched with this intervention – a space that was dead before became a live »School Landscape« with many diverse features, and often rather different from those seen in a standard schoolroom.

However, the main, and now the only, entrance to the grammar school, was not adapted to the current conditions. Today a very busy road passes the school building that makes it impossible for students to socialise in front of the school, and it is also not possible to extend this area in order to clearly indicate where the main entrance actually is. This is why the architects decided to move the space for socialising into the interior of the building. Unlike in the classic forms, the entrance hall here opens directly to the corridor and towards an internal courtyard. This space represents the first contact between the school and a visitor, and should as such be seen

as the most representative part of the ground floor, which in this case can take over the role of a semi-public parterre, the role of a loggia. The architects positioned the »Loggia« as part of the existing structure of the building, and at the same time framed the view onto a planned sunk gym. With well-thought-through interventions they added new value to this space and turned it into an interior school square. They emphasised it with an attractive, historic and at the same time informative ceiling wallpaper that illustrates the past of the Ljubljana College of Education, and presents the most important members of staff who worked there over the years. They have placed movable frames along two walls that hide different elements and enable a diverse range of spatial configurations. These make it possible not only to completely clear the space, but also to arrange it for larger gatherings or exhibitions; and if the elements are pulled out it is possible to create various working corners and spaces for either chatting in groups or sitting on your own. Behind these frames there are 12 pull-out spectator stands, six tables and 26 soft elements, cubes and rectangular volumes, with which the students can create their own spatial situations.

The *Svet vmes* architectural office also realised two projects at the Poljane Grammar School in Ljubljana – the Nine Frames Hall and an exterior atrium. The Poljane Grammar School was established in 1889, and boasts high-quality historic shells that retain the original wall and ceiling moulding,





**Atrij**, Gimnazija Poljane,  
Ljubljana, Slovenija  
**Pebble Atrium**, Poljane Grammar  
School, Ljubljana, Slovenia

PROJEKT PROJECT  
Prenova zunanjega atrija sloni na ideji  
ponavljajoče se oblike ovalnih trikotnikov,  
kot kamnov (pebbles)  
Renovation of the exterior atrium based  
on the idea of a repetition of the form of  
oval triangles that look like pebbles

LETO YEAR  
2017

ARHITEKTURA ARCHITECTURE  
Svet vmes (Jure Hrovat, Ana Kosi, Ana  
Kreč, Ognjen Arsov, Žiga Rošar) &  
krajinski arhitekt landscape architect  
Nejc Florjanc



and artfully designed pillars that are set in a strict symmetrical axis. This axis represents the link between the small square before the building and the entrance hall and central staircase further on, which is the main path for all users of this building.

When designing the concept of the entrance hall, the architects wished to accentuate these high-quality historic elements; they succeeded in doing so through the implementation of a strict symmetric podium with basic clean square forms and strokes of elegant black. They inserted an elevated, graduated concrete podium into the entrance hall that additionally emphasises the symmetrical entry axis and at the same time invites students to sit there during breaks. Nine steel spatial frames of varied dimensions are affixed to the landing, with transparent fillings that do not obscure the view towards the central staircase. These at first sight fragile geometric bodies set against the background of white walls and featuring rich historic forms that appear especially aesthetic, much like an art intervention or installation, adding an element of surprise in the school environment. Their role, however, is also entirely functional – seven cubes are intended to be used for school exhibitions, one cube will feature a permanent exhibit, a sculpture, and one cube functions as a gatekeeper's lodge. The ambience is rounded out by a large yet minimalist light that, in an accentuated way, illuminates the historic ceiling adorned with floral

mouldings, which emphasises the representative nature of the entrance hall.

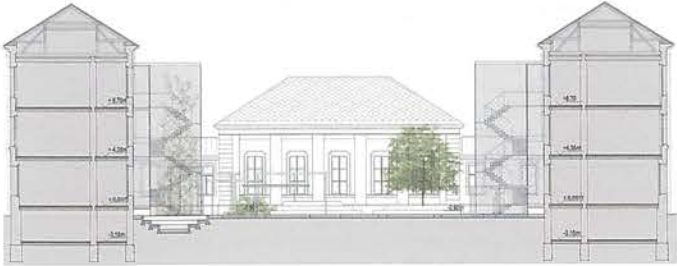
The second project is the arrangement of the exterior atrium of the school that is registered as cultural heritage site. What the architects saw when they first came there was a run-down space determined by the courtyard facades of the building and asphalt floor surface. It was here that the paths between the school building and gym were school events were staged, and students were meeting in their free time. The Svet vmes office decided to take a radical approach – they intervened into the rigidity of the existing structure with the use of natural, organic, soft and pleasant elements and materials. They used a fragmented pattern of repeating rounded forms of an irregular triangle. With the metamorphosis of this element in size, proportion, form and material they answered all the needs of the space's users. Not only did they develop micro-locations so that users could meet each other, while at the same time keeping open the possibility of organising school events, they also provided a variety of forms and materials, as well as introducing plants that reflect the changing seasons, and even a water mirror. A fragmented pattern of triangular elements that are distributed in space as stones has been interpreted as a positive, while an interspace (in-between space) has been interpreted as a negative that connects these elements. The architects have thus fulfilled the wishes and needs of the client, such

as the distance from the façade, non-orientation of the square, and different functional »islands«. The third dimension of the atrium is equally important – the graphically clean urban landscape on the ground plan communicates via windows with all the school corridors that are oriented onto the square, which is an important contribution towards the tidy organisation of the entire surroundings.

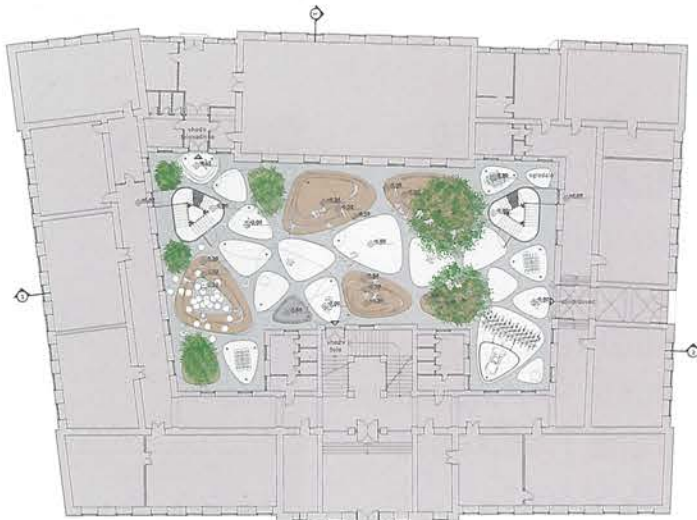
The Svet vmes office has already implemented a number of projects related to educational buildings; these function as micro-environments used by toddlers, children, teenagers and adults alike. The architects Jure Hrovat and Ana Kreč therefore hold a number of important threads in their hands, as well as their heads and hearts – they want to educate users about the culture of living, about a certain attitude towards the beautiful, about an understanding of the designed environment ...

They have received many awards for their work both in Slovenia and abroad; in 2015, their office was recognised as a »venturous design practice« with a strong social agenda, and as such, included in the international research network ADAPT-r ITN -Architecture, Design and Art Practice Training-research. ©

1 Prerez  
2 Tloris pritličja  
1 Section  
2 Ground floor plan



1



2

